

Validate CAD Models & Manage Change

Supply Chain Challenges

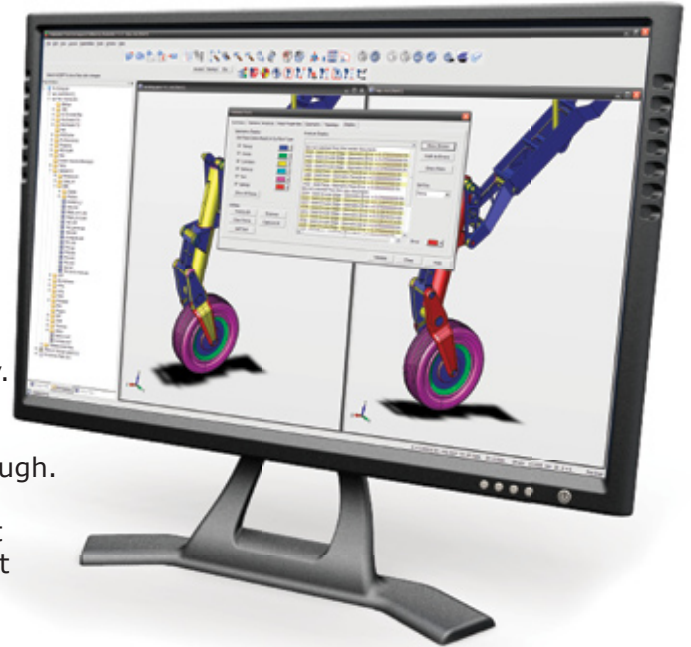
Supply chain communication is relying on 3D CAD models as the data authority. When translation changes or design revisions occur and go undetected, costly manufacturing errors will occur downstream. In a 3D model centric environment, both OEM's and their supply chains are required to validate shared data against the authority model.

Model Exchange Management

Kubotek's Validation Tool provides precise comparisons between 3D CAD models, allowing you to quickly pinpoint changes in model data. Validation Tool gives the user complete control over the validation criteria.

The tool tests such features as face sizes, locations and types, as well as model volume, area, center of gravity and topology.

The validation results are processed rapidly, returning an interactive, visual 3D walk-through. The final report also includes an encrypted validation certificate that stores a fingerprint of the validation process, ensuring the report data is authenticated.



Moreover, Validation Tool provides a full set of manual diagnostic, visualization and model repair capabilities. Models from all major CAD systems are supported without requiring any CAD licenses.

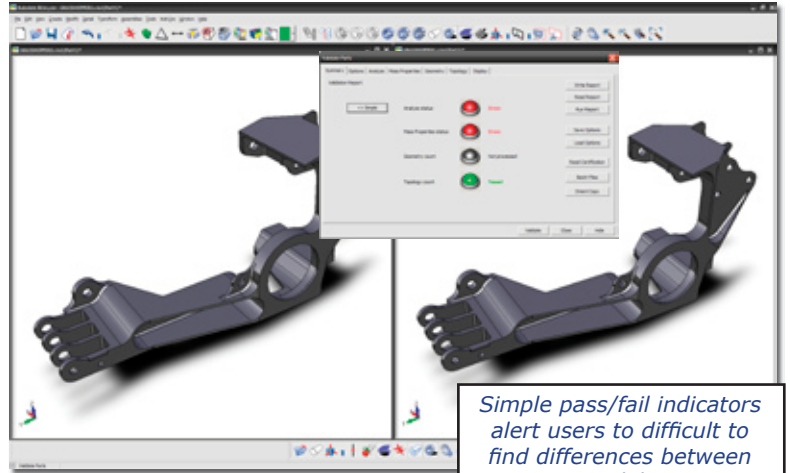
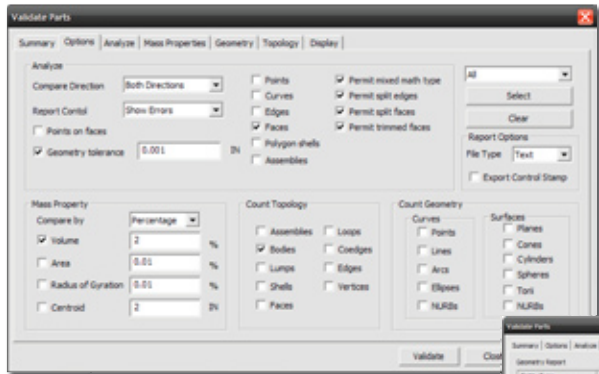
Validation Tool assures the highest quality model is maintained prior to manufacture.

Benefits

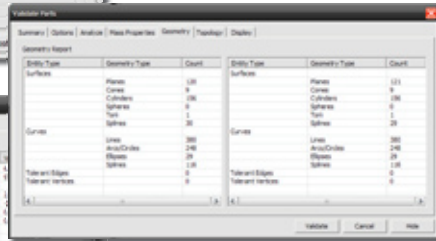
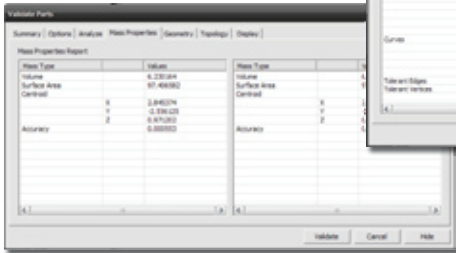
- ✓ Compliance with OEM Quality Procedures for Data Management
- ✓ Increased Quality & Eliminate Mistakes Prior to Manufacturing
- ✓ Trust Your Final Model before you manufacture
- ✓ Better Estimate Business Impact to Design Changes
- ✓ Reduce Risk
- ✓ Save Time
- ✓ Meet Boeing D6-51991 Compliance



Kubotek's Creation Engineering division is a global leader in development of direct solid modeling software technology. This rapidly emerging modeling strategy enables more efficient re-use and sharing of precise 3D models throughout the manufacturing supply chain. Kubotek's software products are relied on daily by thousands of engineers worldwide.



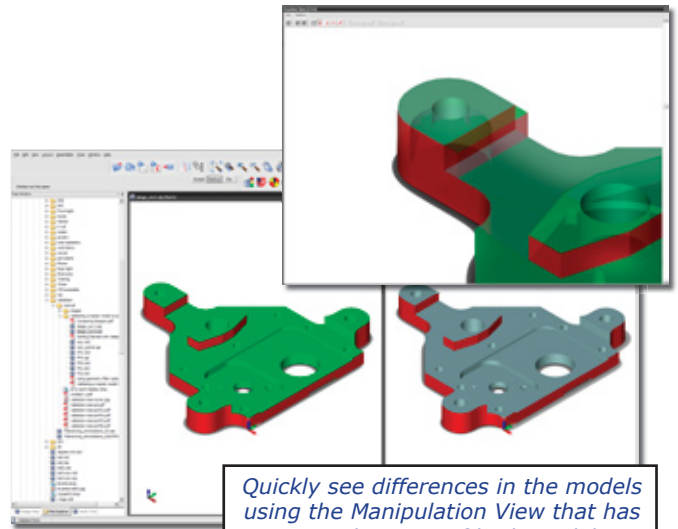
Simple pass/fail indicators alert users to difficult to find differences between models.



System Recommendations

Processor:	Intel Pentium 4
Processor Speed:	2 GHz or better
RAM*:	2 GB
Graphics Resolution:	1280 x 1024 or higher
Graphics Card**:	3D OpenGL*, 128 MB+
Hard Disk Space:	3 GB+ for paging file
Operating System:	Windows XP Professional
User Level Account:	Power User

*RAM 4 Gig for large models (50Meg+) validation
 **Graphics cards are tested by TechSoft America. To review the most recent test results, please visit: <http://developer.hoops3d.com/graphicscards/graphicscards.html>



Quickly see differences in the models using the Manipulation View that has an overlay view of both models.

For file formats supported information please see <http://www.validatecad.com/pdf/validate-translators.pdf>

©2008 Kubotek Corporation. All rights reserved. Kubotek, KeyCreator, CADKEY, Validation Tool and REALyze are trademarks or registered trademarks of Kubotek Corporation in the USA and/or other countries. ACIS is a trademark of Spatial Technology Corporation. All other trademarks contained herein are the properties of their respective owners.

